

The Elements of Design

Elements of Design

The basic components used by the artist when producing works of art. Those elements are:

- **Shape**
- **Form**
- **Value**
- **Line**
- **Color**
- **Texture**
- **Space**

Shape

An enclosed space defined and determined by other art elements such as line, color, value, and texture. Shapes can be categorized into two different types: **Geometric** and **Organic**.

Organic

An irregular shape, or one that might be found in nature, rather than a regular mechanical shape.



Geometric

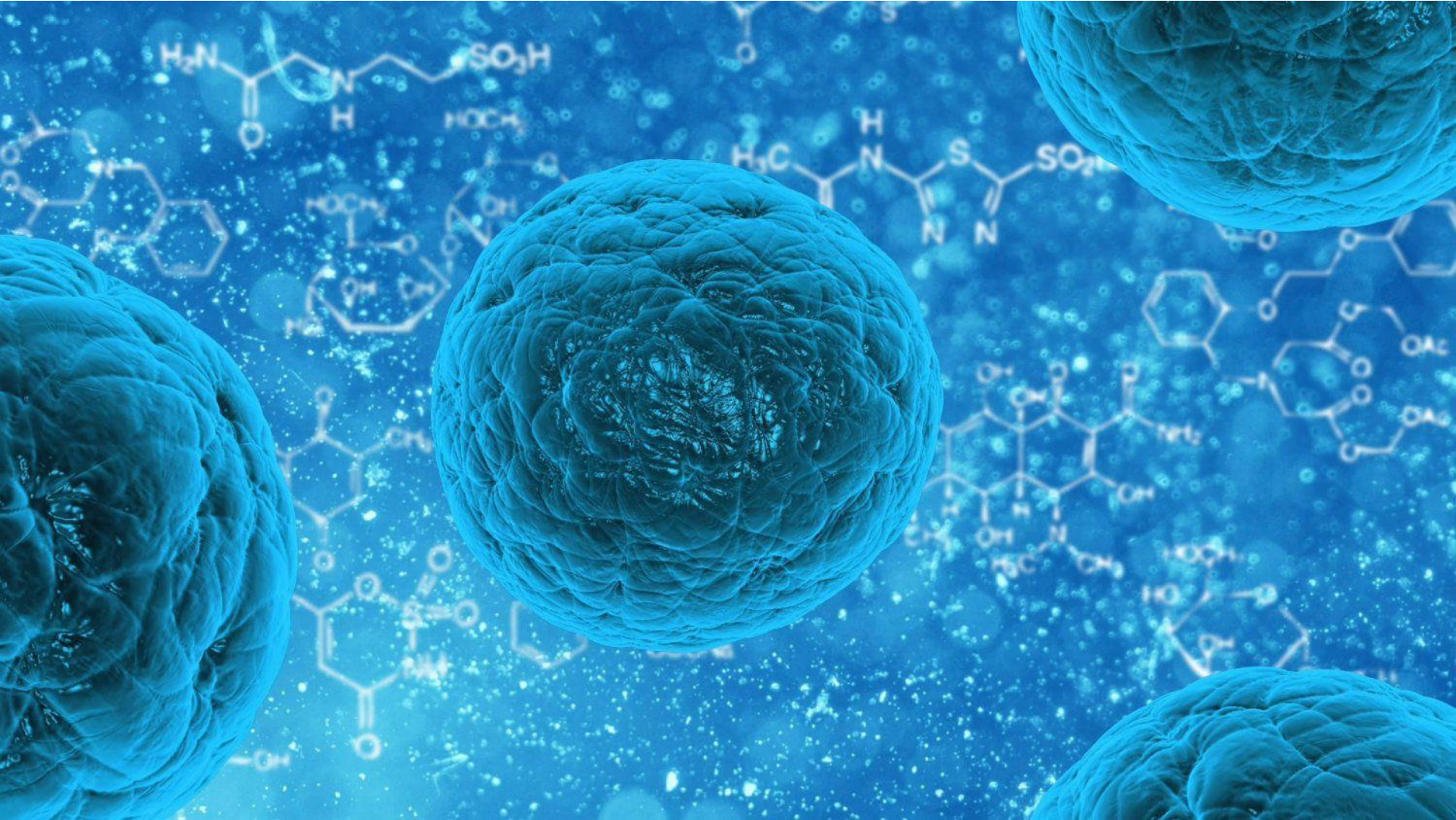
Shapes that are created through use of mathematics. These shapes include **Circle, Oval, Triangle, Square, Rectangle, Hexagon, Octagon and Pentagon.**



2 dimensional shape



3 dimensional shape

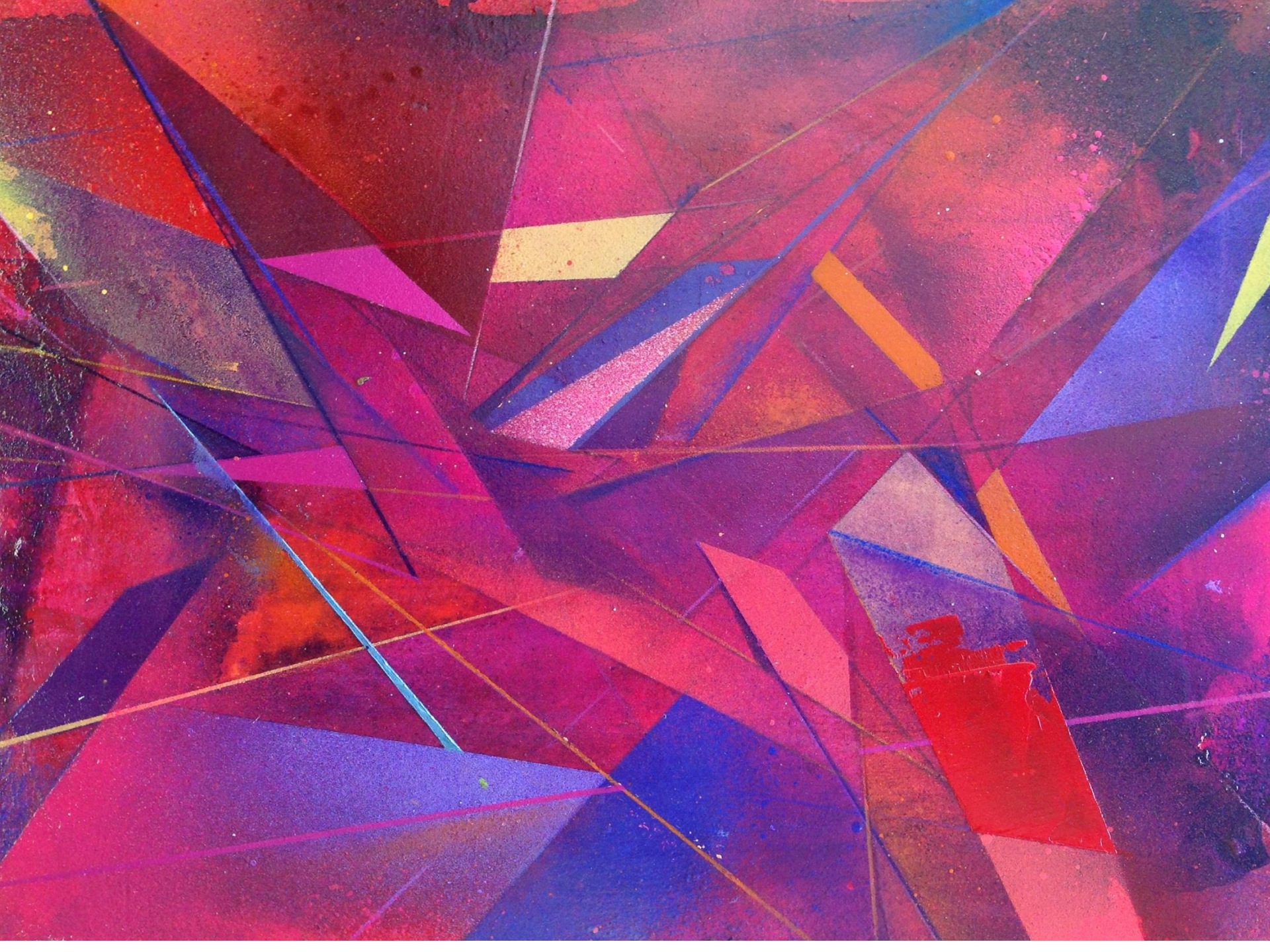


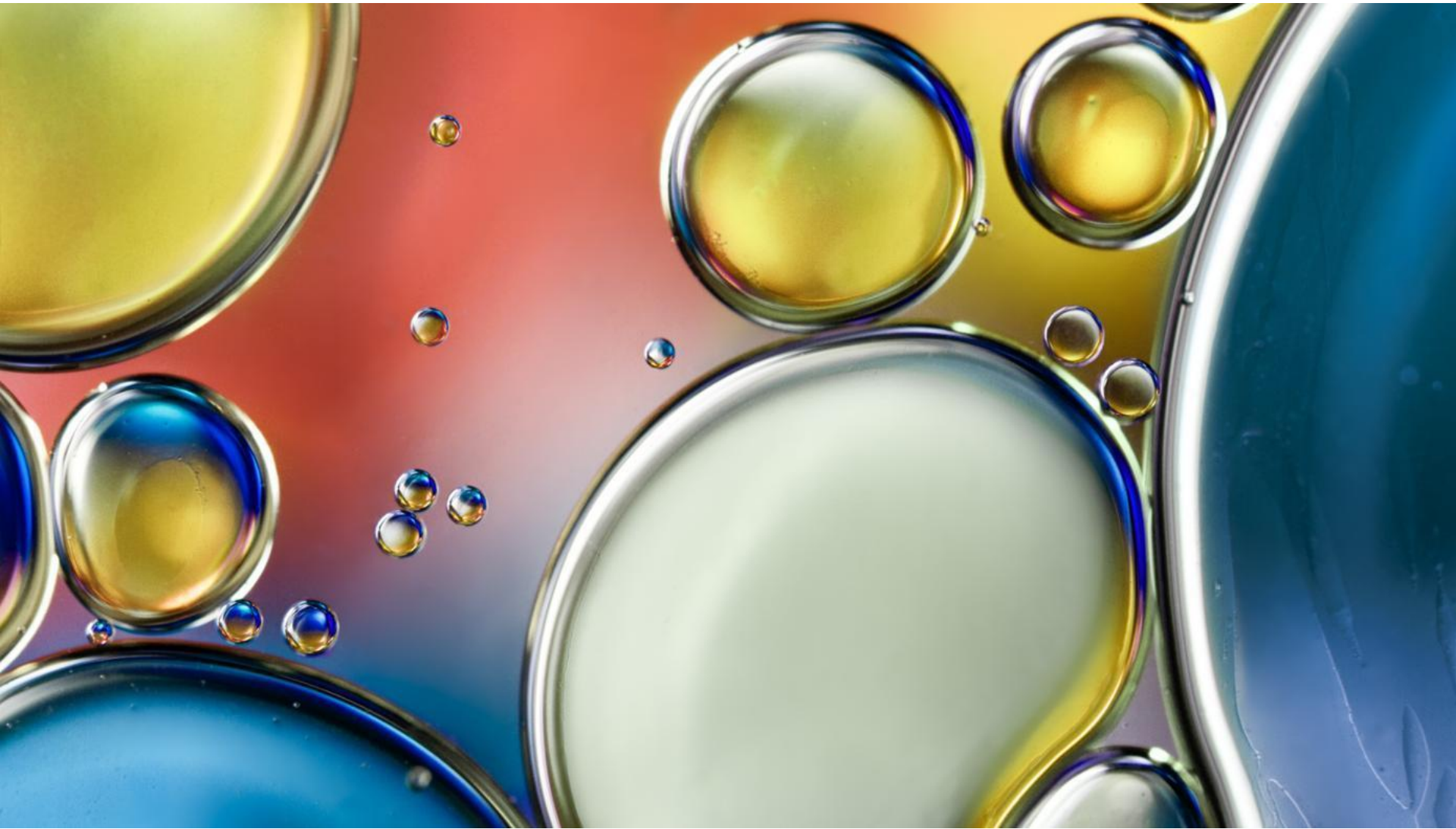








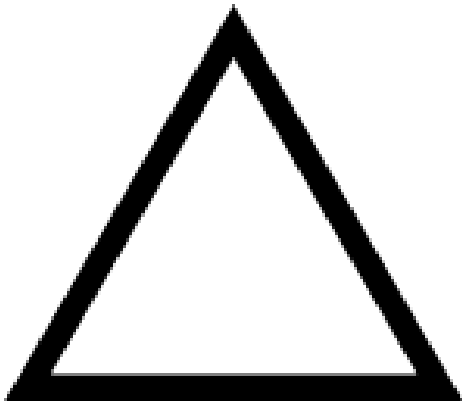






Form

An element of art that is three dimensional (height, width, and depth) and encloses volume. For example a triangle, which is two dimensional, is a shape, and a pyramid, which is three dimensional is a form.



Examples of forms include: **Cubes, Spheres, Ovoids, Pyramids, Cones and Cylinders.**



CUBE

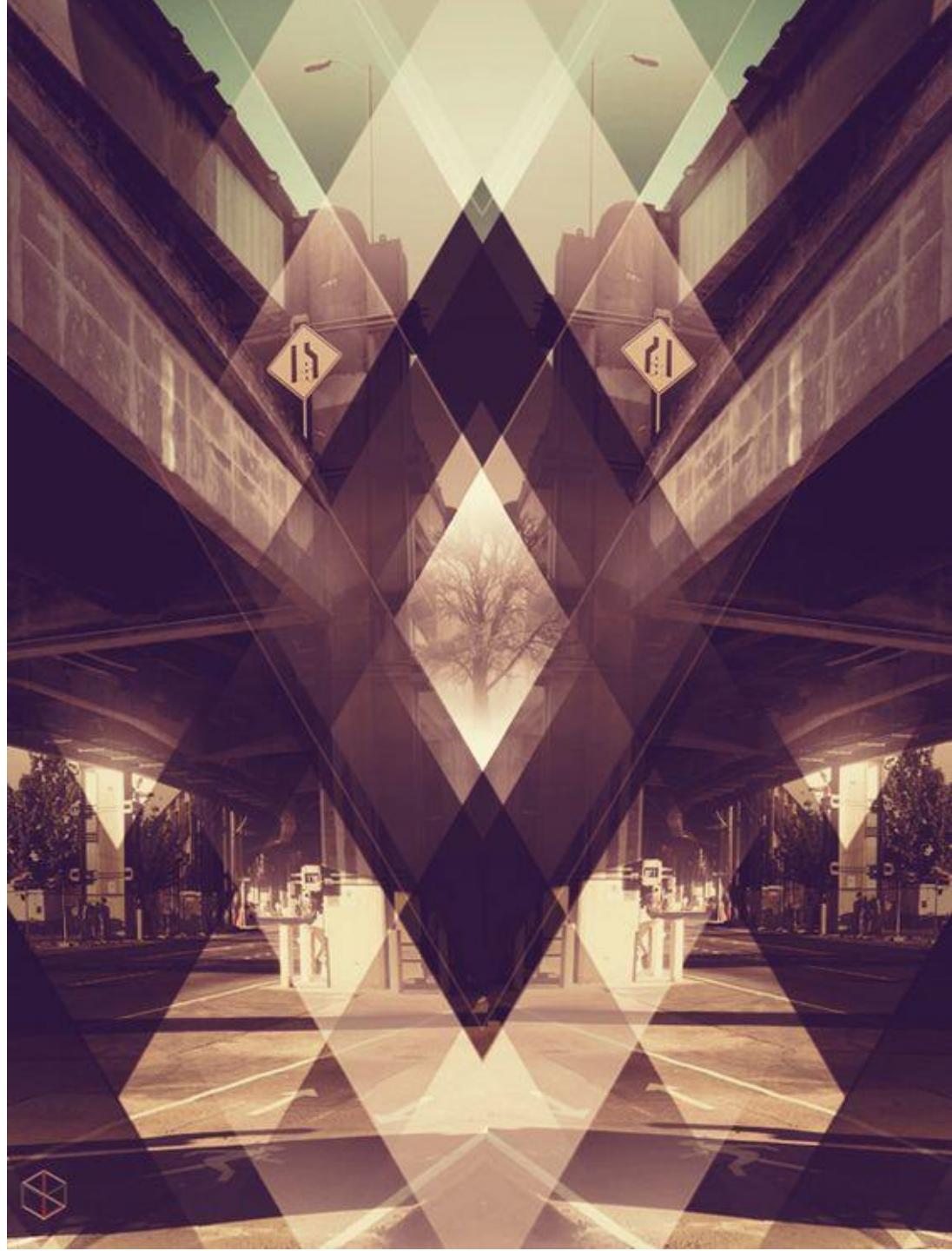
SPHERE





SPHERE

PYRAMIDS





JULY 7-12 · 2012 · TIVOLI THEATRE · WWW.CINEMASTLOUIS.ORG



BUSINESS TIMELINE STAR-UP



INFOGRAPHIC STEP 05

Consectetur adipisicing elit, sed do eiusmod tempor incididunt ut labore et dolore magna aliqua.



INFOGRAPHIC STEP 04

Consectetur adipisicing elit, sed do eiusmod tempor incididunt ut labore et dolore magna aliqua.



INFOGRAPHIC STEP 03

Consectetur adipisicing elit, sed do eiusmod tempor incididunt ut labore et dolore magna aliqua.



INFOGRAPHIC STEP 02

Consectetur adipisicing elit, sed do eiusmod tempor incididunt ut labore et dolore magna aliqua.

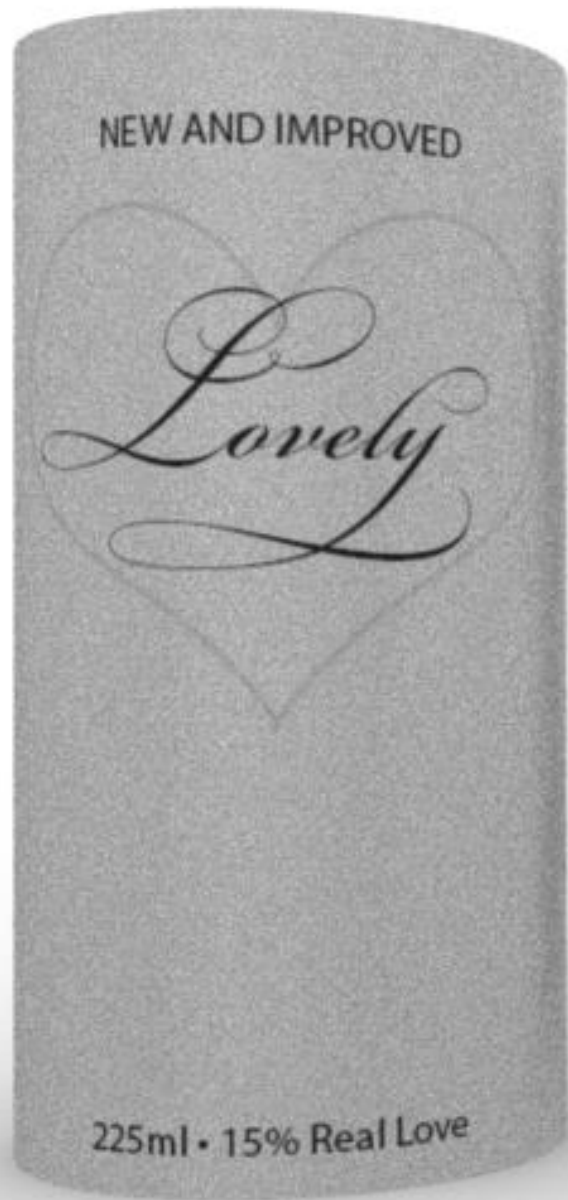


INFOGRAPHIC STEP 01

Consectetur adipisicing elit, sed do eiusmod tempor incididunt ut labore et dolore magna aliqua.



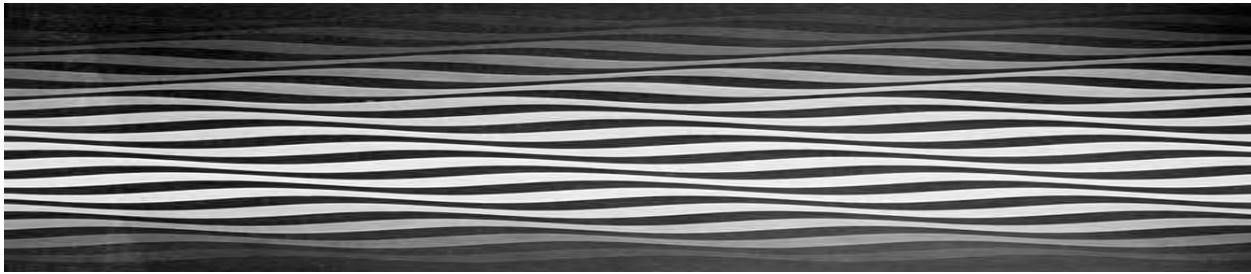
CONES



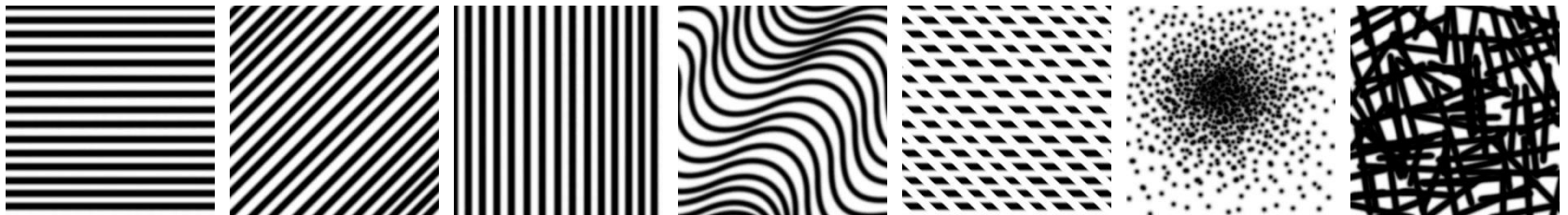
CYLINDERS

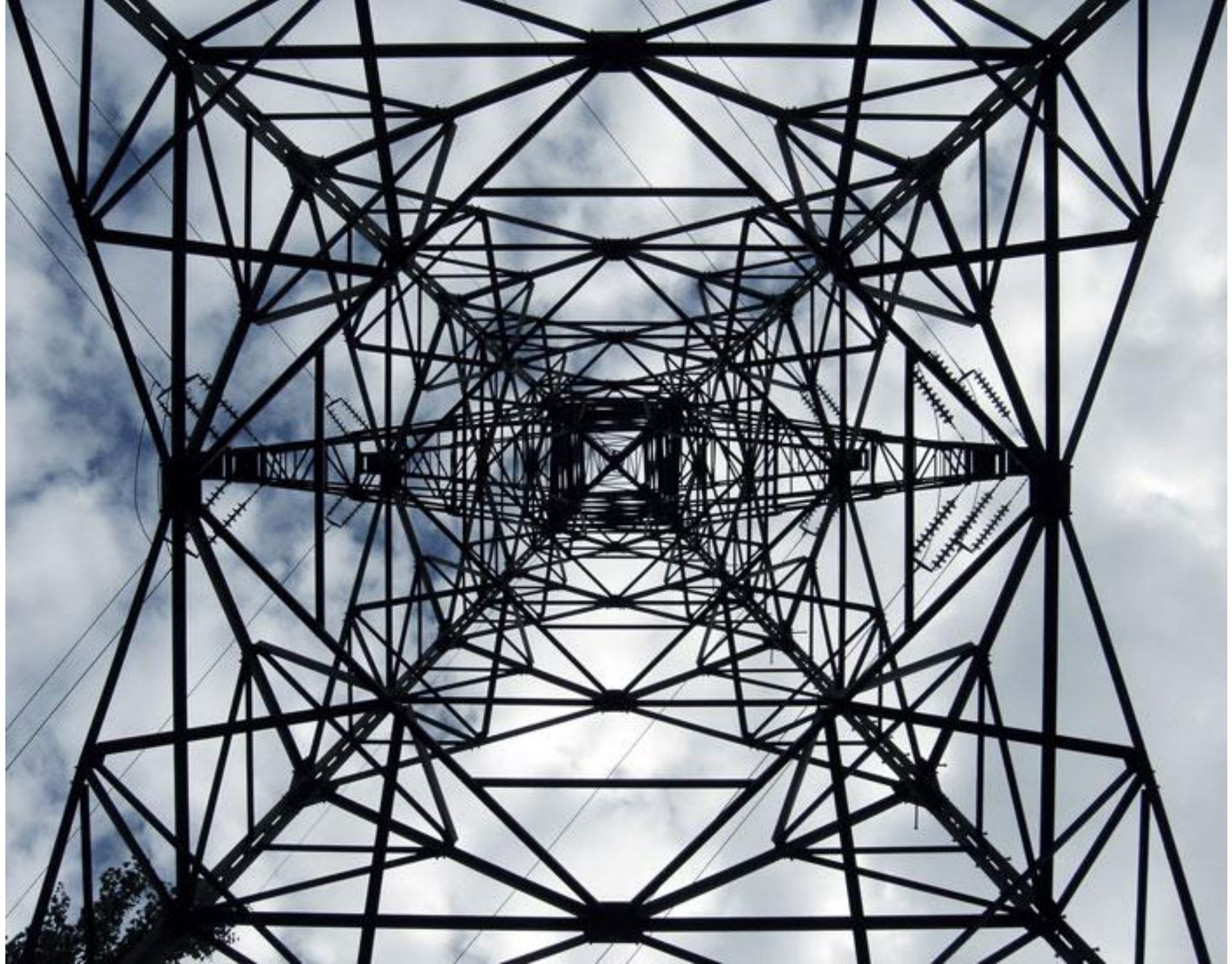
Line

A line is the path of a point. Often it defines a space and creates an outline or contour, defines a silhouette, create patterns, or movement, and the illusion of mass or volume. It may be two-dimensional (as with pencil and paper), three-dimensional (as with wire) or implied (the edge of a shape or form.)



Types of lines include; **vertical, horizontal, diagonal, straight or ruled, curved, bent, points, angular, thin, thick, or wide, interrupted (dotted, dashed, broken) blurred or fuzzy, controlled, freehand, parallel, hatching, cross-hatching, meandering, and spiraling.**









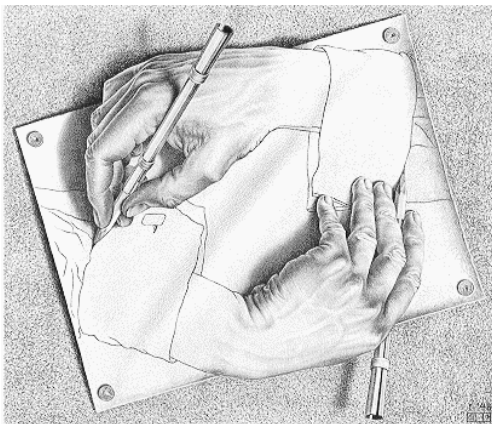


Value

An element of art that refers to the lightness or darkness of a color. Value is an especially important element in works of art when color is absent. This is particularly likely with drawings, lithographs, photographs, and sculpture.

Value Scale

A gray scale, a series of spaces filled with the tints and shades of one color starting with white or the lightest tint on one end, and gradually changing into the darkest shade or black on the other.



Chromatic-Achromatic



G. Verdi
V. Bellini G. Bizet
C. Saint-Saëns G. Puccini

Opera gala

Hrvatski glazbeni zavod
Gundulićeva 6
Nedjelja, 11. 4. 2010.
20:00 sati

Virtuoso

Ciklus koncerata studenata Muzičke akademije u Zagrebu
ULAZNICA: 20 KN

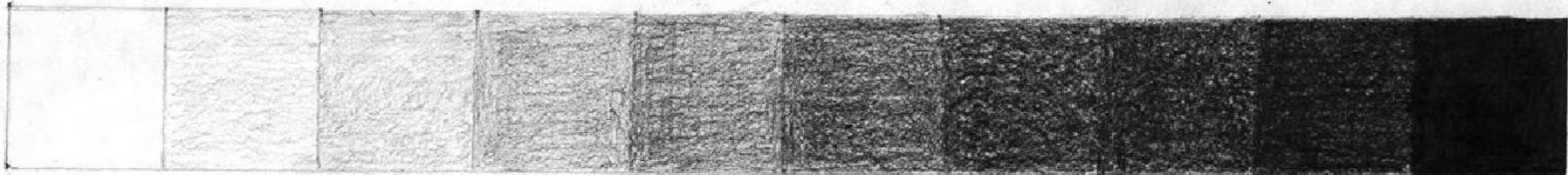
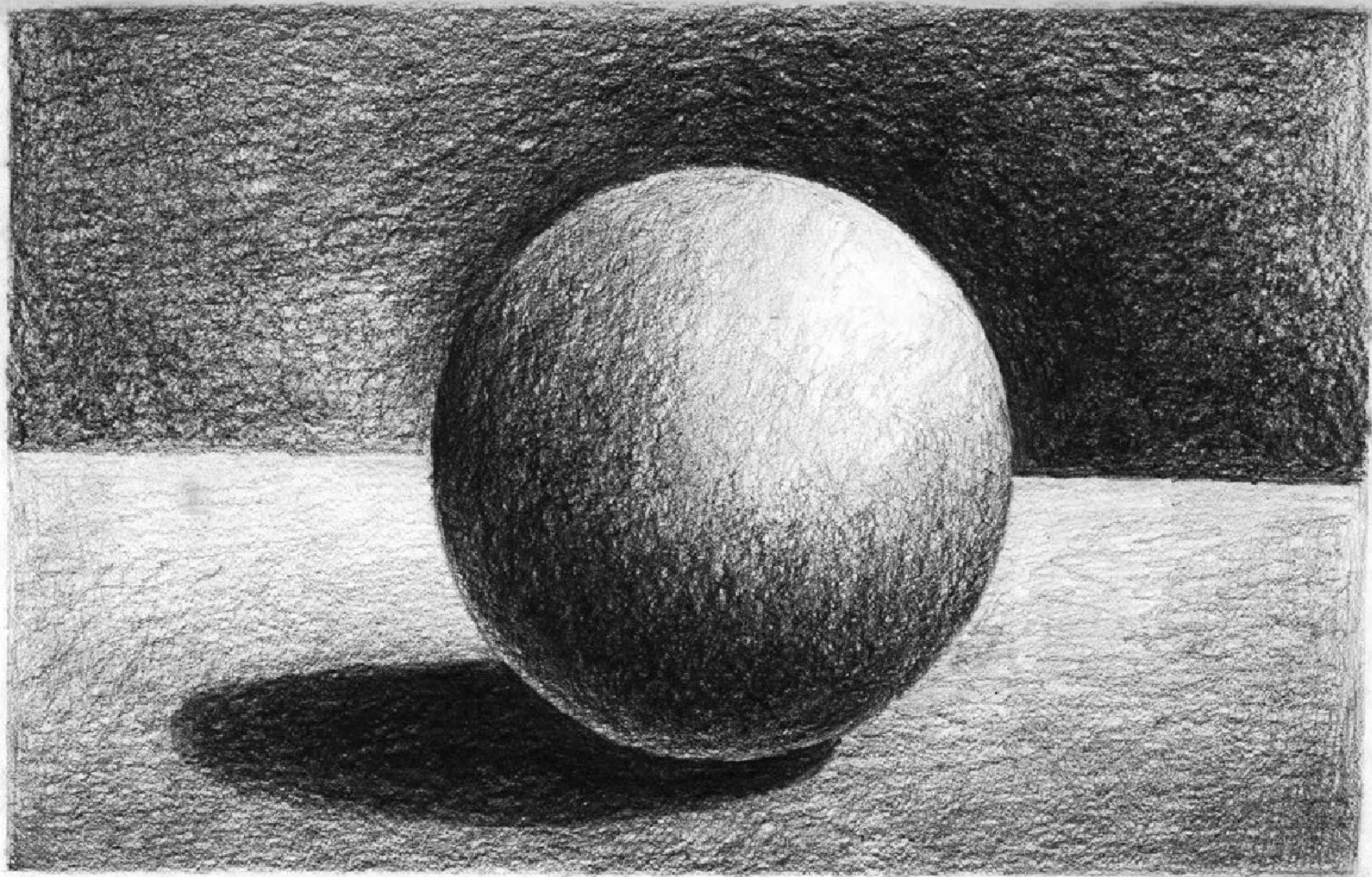
Organizator: Muzička akademija studenata (MAS) u Zagrebu, uz podršku grada Zagreba. Ciklus "Virtuoso" održava se uz blagovoljni doprinos Gradskog sindikata i Ministarstva kulture i sporta Grada Zagreba, a pomoć joj Prof. Lidvanne Čukarić.

Apple iPod



Welcome to the digital music revolution. 7,500 songs in your pocket.

Works with Mac or PC. Over a million sold. The new iPod.

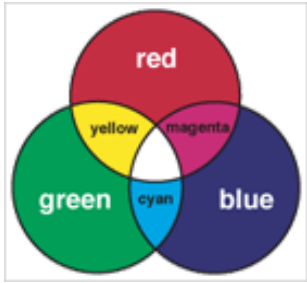




Color

Produced by light of various wavelengths, and when light strikes an object and reflects back to the eyes. Color can be mixed from red, yellow, and blue, can be combined to make new colors, can be mixed for intensity and value, can express moods and feelings, can be warm or cool, can give the illusion of distance.

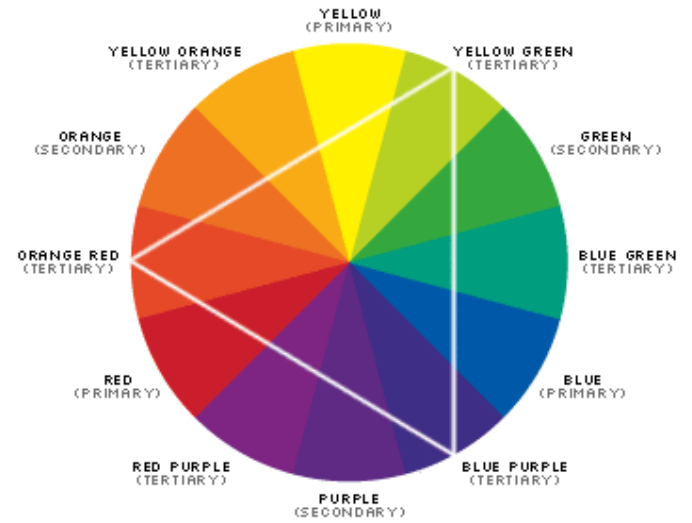




Properties of Color

Hue/Tone

The name of a color. The primary hues are red, yellow, and blue.



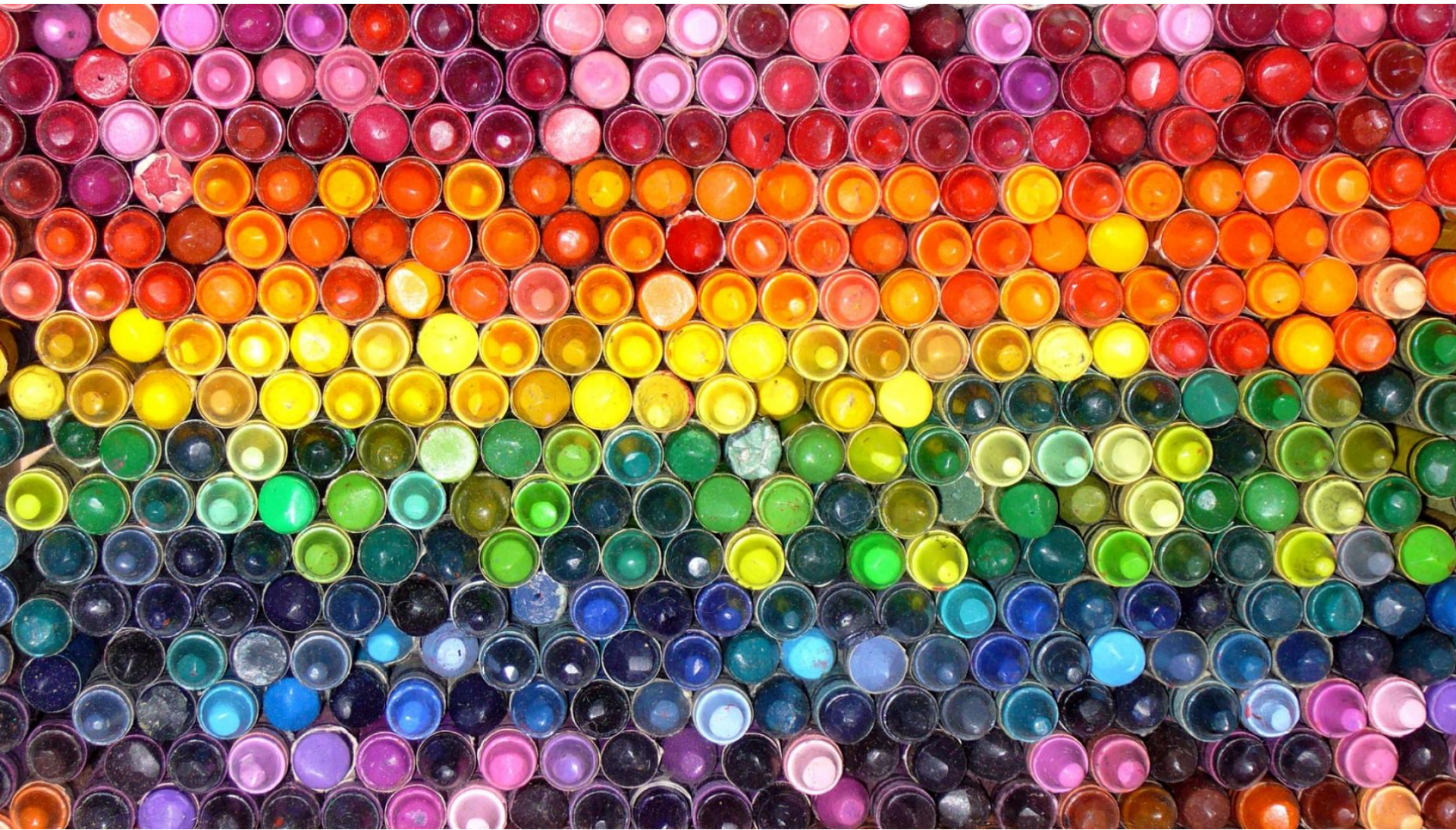
Intensity

Refers to the brightness and dullness of a color.









Texture

An element of art, texture is the surface quality or "feel" of an object,, its smoothness, roughness, softness, etc. Textures may be **Actual** or **Implied**.

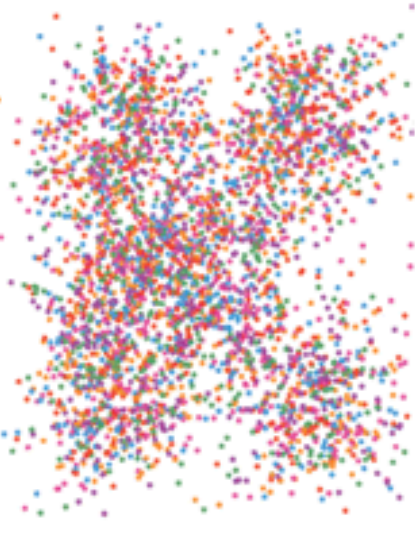


Actual textures can be felt with the fingers.

While implied textures are suggested by an artist in the painting of different areas of a picture — often in representing drapery, metals, rocks, hair, etc.



ALL THE LOVE
GONNA BE
TURNING MY
WORLD TO
BLACK



Yeohyun Ahn

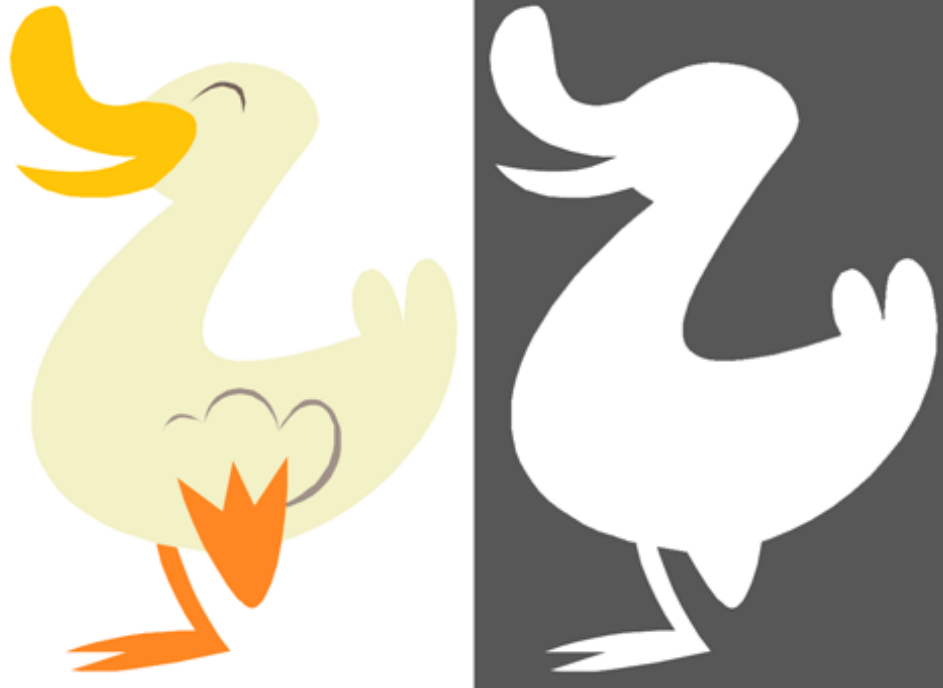


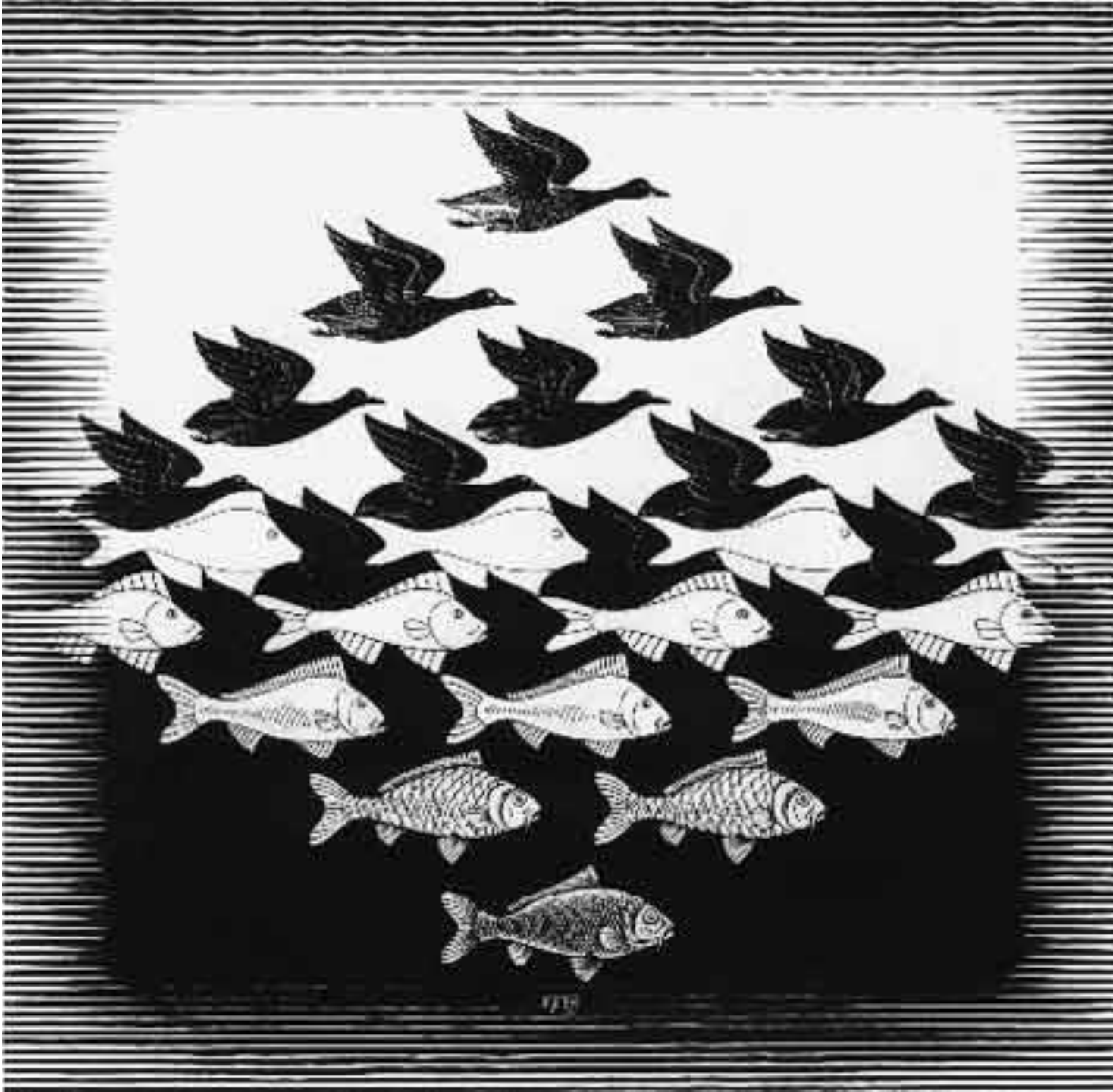


Space



An element of art that refers to the distance or area between, around, above, below, or within things. It can be described as two-dimensional or three-dimensional; as flat, shallow, or deep; as positive or negative; and as actual, or illusory.







C. COLES PHILLIPS.

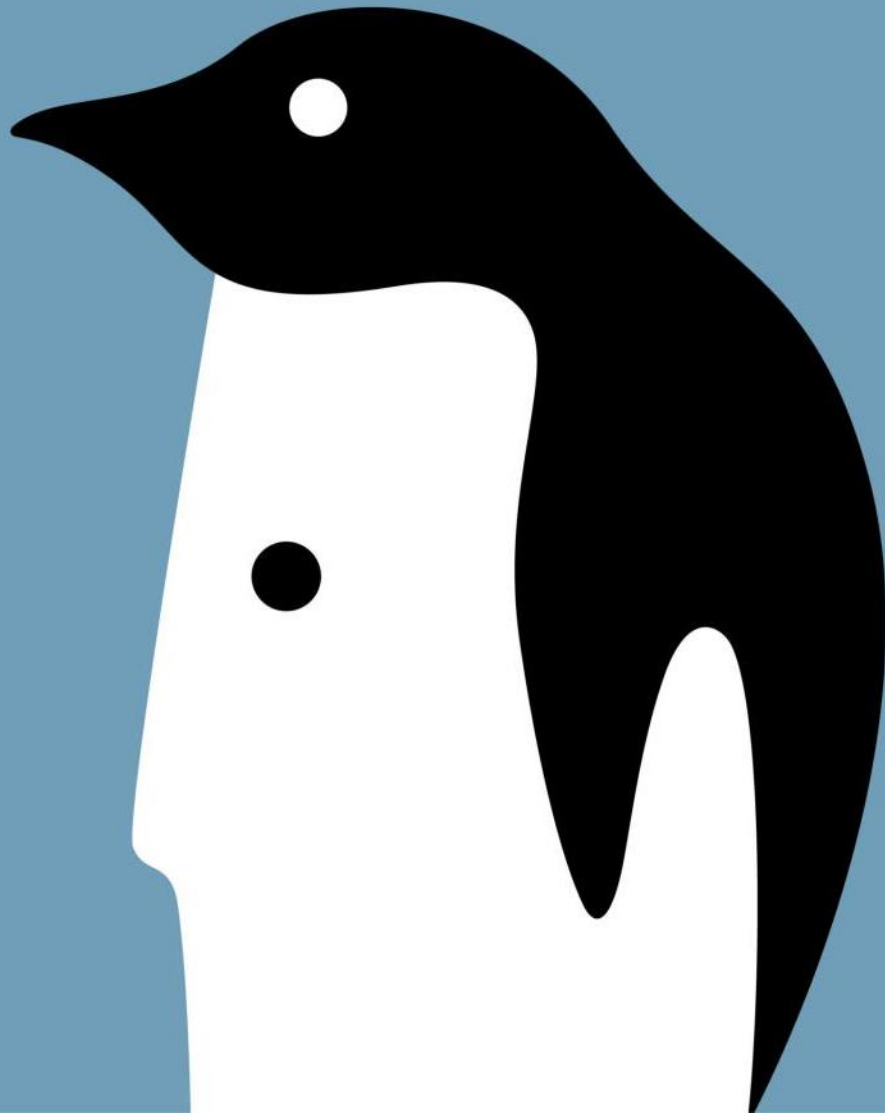


Now data helps pinpoint more oil.

In Venezuela, IBM deep computing processes seismic data, helping Tricon Geophysics pinpoint new oil and gas using 40% less energy. ibm.com/smarterplanet



© 2011 International Business Machines Corporation. All rights reserved. IBM, the IBM logo, and Smarter Planet are trademarks of International Business Machines Corporation. Other names and logos are trademarks of their respective owners.





Your hair is asking for help.
Use a gel that won't damage it.



PANTHENOL
SILICONE
100%
ALCOHOL FREE